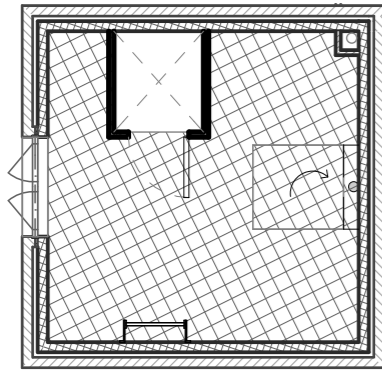
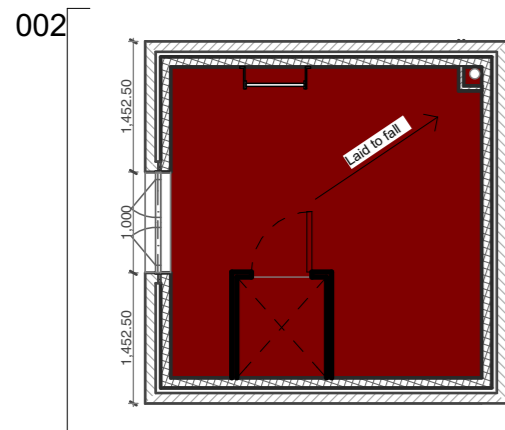


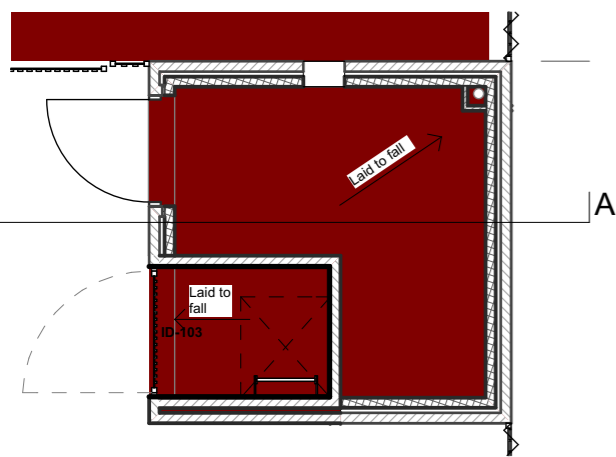
Training Tower 3rd floor



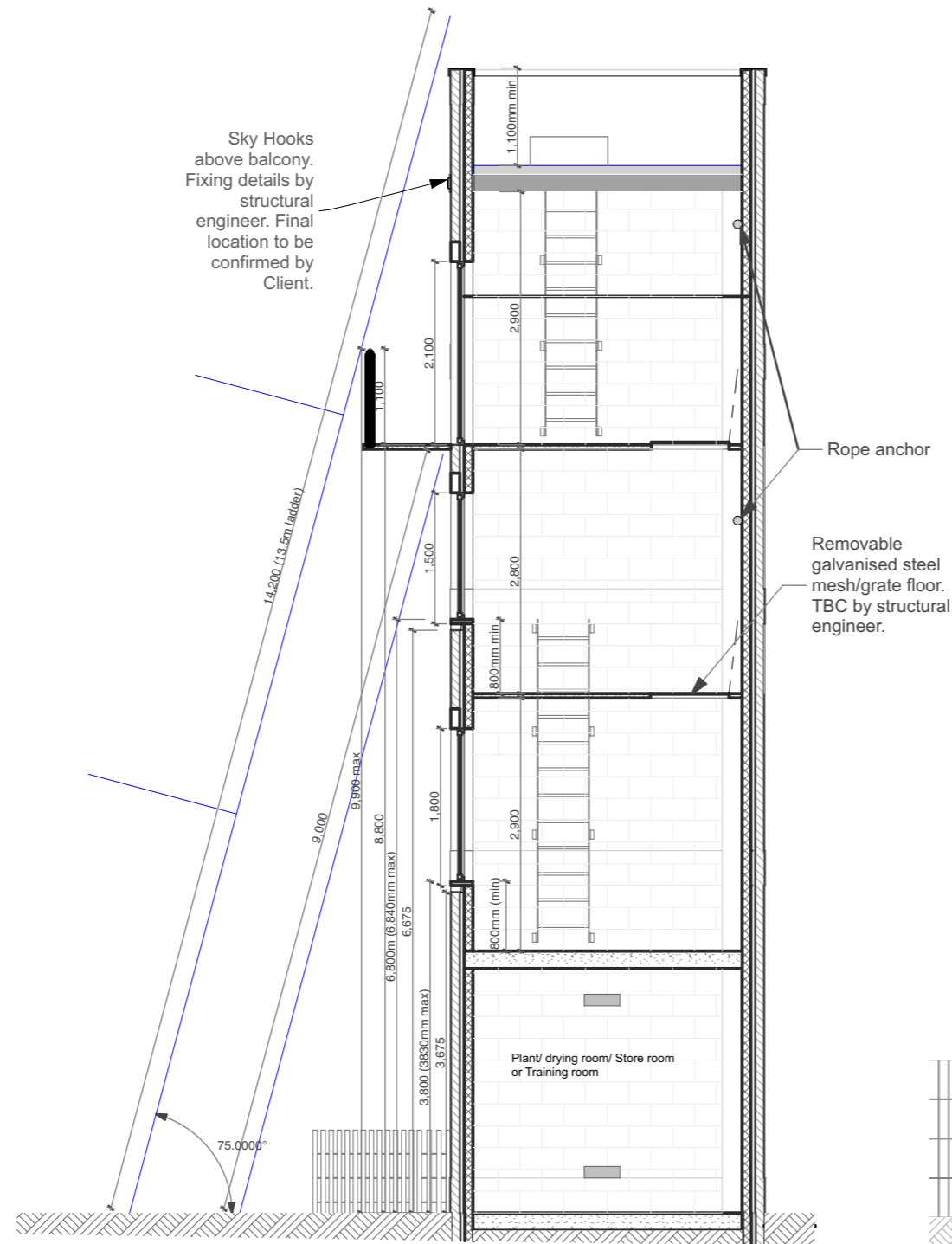
Training Tower 2nd floor



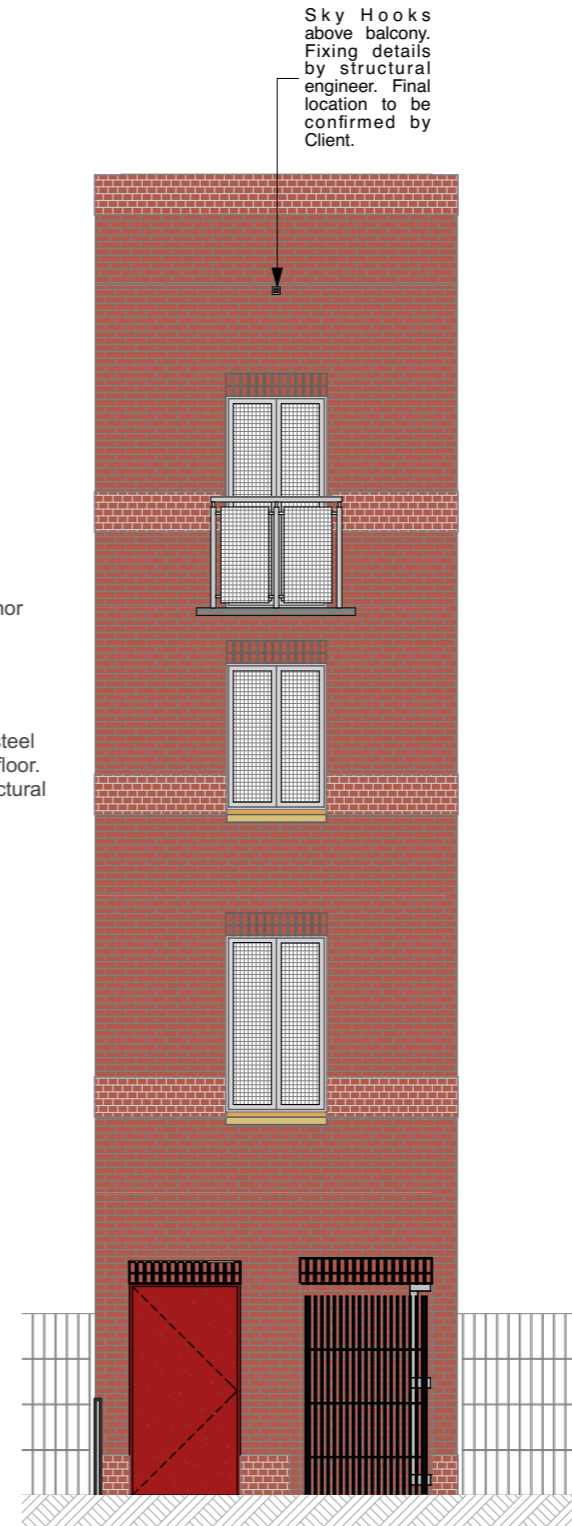
Training Tower 1st Floor



Training Tower Gr Floor



Tower Section-A



Training Tower Elevation 002

Notes

4 number rope Anchor point locations to structural engineers @ each floor level design and detail

Window Cills to be H/W timber cills with pigeon protection.

Window grilles to be hinged.

Galvanised steel mesh / grate floor to be openable and fixed to tower walls during use. Refer to structural engineers details and specification.

Galvanised steel access ladders to be tied back to wall. To structural engineers design and detail

Floor gully to wet room. Additional gully requirements to structural engineers design and details.

Internal RWP's to be appropriately size to take water run off.

Flat roof to be construction to be finished with concrete paving slabs to Structural Engineers details.

Lockable gate to external access ladder to prevent unwanted access.

Balcony and Parapet to fully comply with the Building Regulations i.e. handrail / parapet heights, handrails sizes etc

Sky hook over balcony. Exact location to be confirmed with Client. Fixing details by structural engineer

Typical Training Tower Details

